

Punctuation Cards

Curriculum References

Ws/E1.2	- Punctuate a simple sentence with a capital letter and a full stop.
Ws/E1.3	- Use a capital letter for personal pronoun 'I'.
Ws/E2.3, E3.3	- Use punctuation correctly e.g. capital letters, full stops, question marks.
Ws/E2.4	- Use a capital letter for proper nouns.
Ws/L1.3	- Punctuate sentences correctly and use punctuation so that meaning is clear .
Ws/L2.4	- Punctuate sentences correctly and use punctuation accurately (e.g. commas, apostrophes, speech marks).
Rs/E2.4, E3.3, L1.2	- Use punctuation and capitalisation to aid understanding.
Rs/L2.2	- Use punctuation to help interpret the meaning / purpose of texts.

Margaret Adams, the contributor, explains ...

- I am attaching some punctuation cards that I laminate and use with students (as a fun way of practising punctuation).

Students have to work out what punctuation mark each card represents (usually working in pairs).

I then give out cards (according to level) along with a piece of unpunctuated text.

I read the text out loud to the students and they have to stand up and wave their card when they think their punctuation mark should go in. It is possible to use all or a selection of cards, depending on what I am teaching.

Answers

Card 1 - capital letter

Card 3 - speech mark

Card 5 - comma

Card 7 - colon

Card 2 - full stop

Card 4 - apostrophe

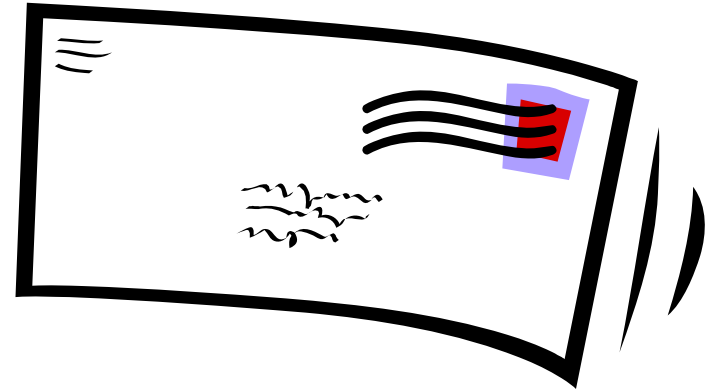
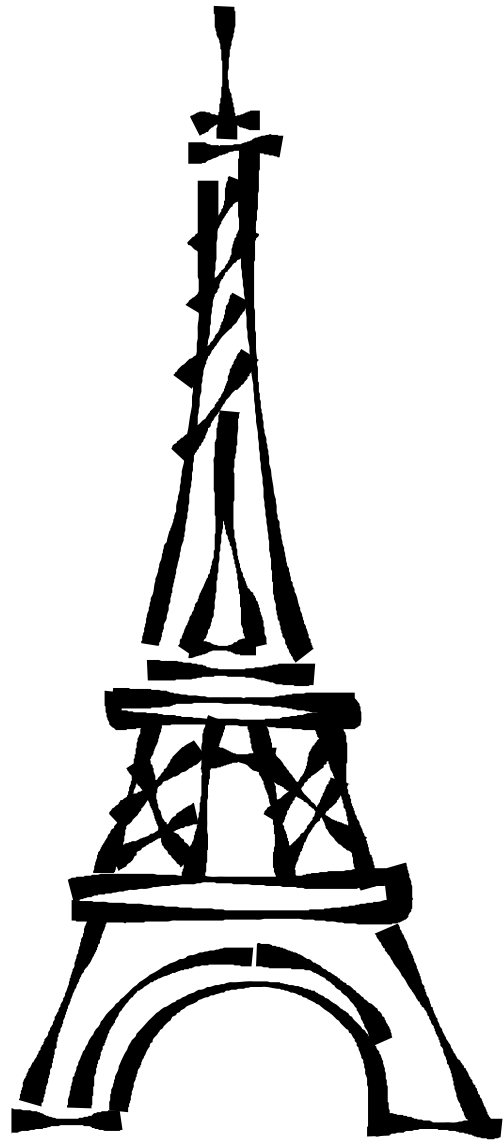
Card 6 - semi colon

Card 8 - question mark

To obtain an editable version of the original Word document please send teaching ideas or any adult basic skills resource that you would like to share to maggie@skillsworkshop.org

THANK YOU

1



2



+



3

My lords, ladies and gentlemen,
I would like to begin by reminding
you that punctuation is very
important.



A

4



+

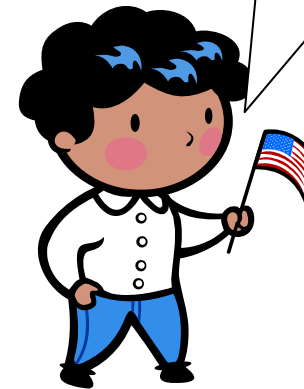


~~y~~ e

5



~~b~~ +

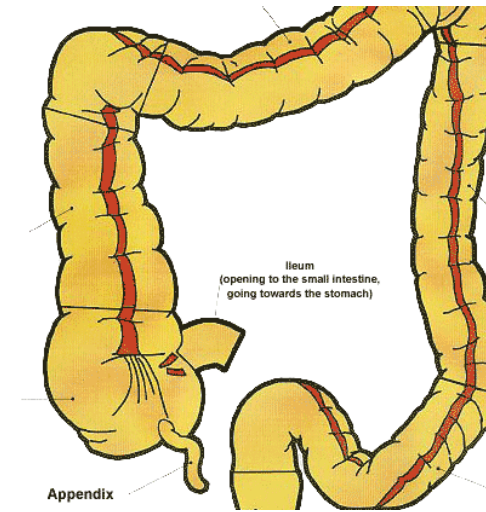


I'm from Texas.
I call my mother "ma".
You'll need those letters
to work out this
punctuation mark!

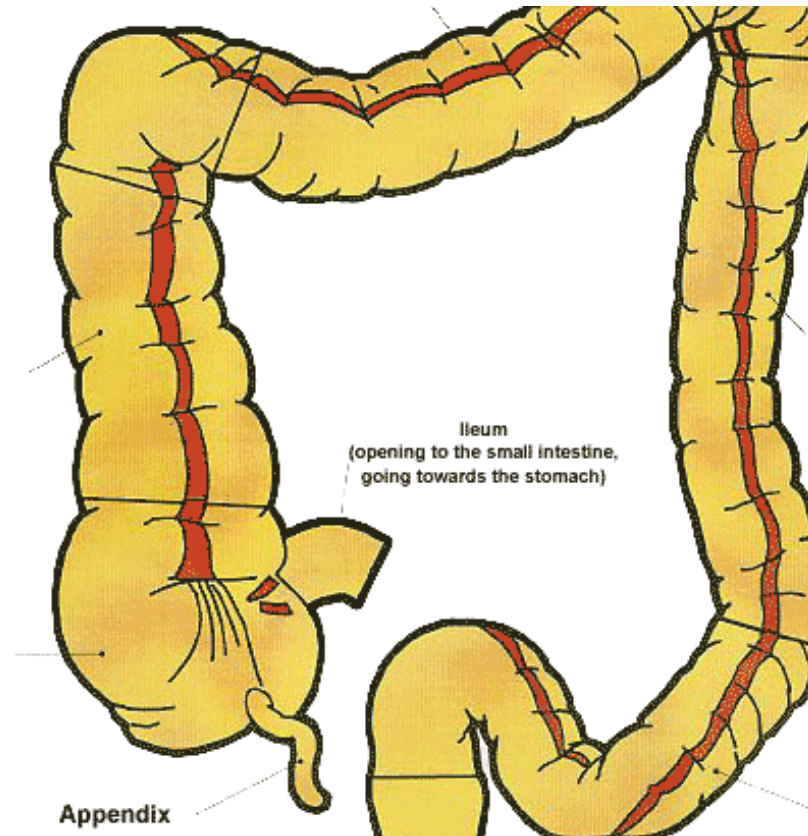
6



+

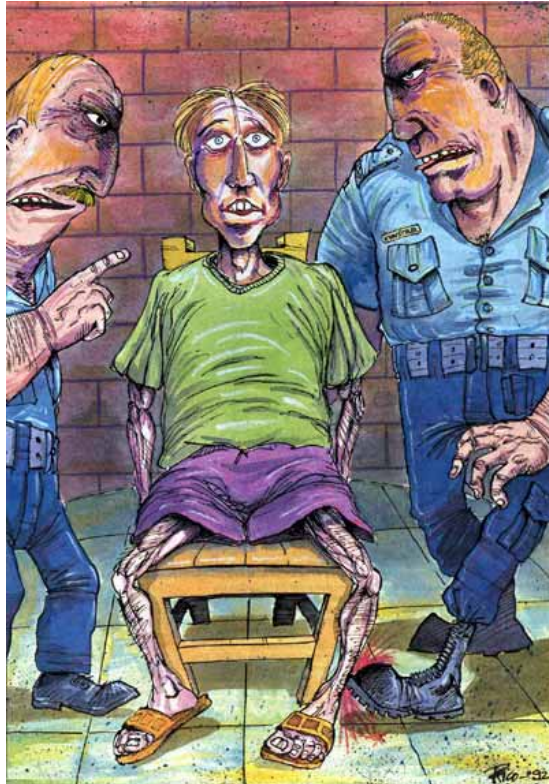


7



This resource kindly contributed by Margaret Adams, uckfield@kenwardtrust.org.uk Kenward Trust and Uckfield Community Technology College

8



Maths test

$$6 + 5 = 11 \checkmark$$

$$3 + 5 = 8 \checkmark$$

$$4 + 9 = 13 \checkmark$$

$$9 - 4 = 5 \checkmark$$

$$10 - 2 = 8 \checkmark$$

$$12 \times 3 = 32 \times$$

$$8 \times 3 = 16 \times$$

$$4 \times 6 = 23 \times$$

5/8

A good try but you need to do some work on your times tables