

Name

The Green Grocer's Shop

The table shows the number of vegetables sold in one week at the greengrocer's shop

| Vegetables | Number Sold |
|--------------|-------------|
| Carrots | 436 |
| Potatoes | 367 |
| Cabbages | 379 |
| Total | |

1a. What was the total number of vegetables sold?

Put your answer in the total box above

1b. Write in words the number of carrots sold

1c. How many more cabbages than potatoes were sold?

Show the sum that you do here.

Answer = £

Name

The Green Grocer's Shop (continued)

1d. One sack of Potatoes costs £27. Lucy buys 3 sacks.
How much do they cost Lucy altogether?



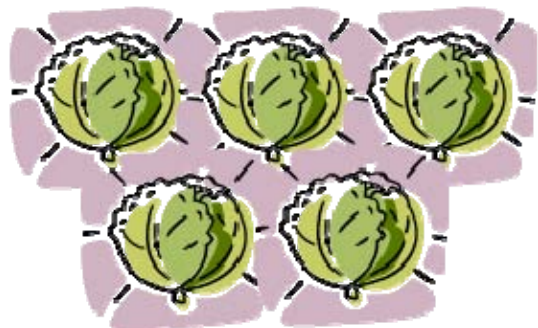
Show the sum that you do here.

Answer = £

1e. A special offer box has 5 cabbages. Ruth buys 9 boxes.
How many cabbages does she buy altogether?

Show the sum that you do here.

Answer =



Name

The table shows Mary's bills

| Bills | Cost |
|----------------|--------|
| Rent | £86.00 |
| Council Tax | £18.07 |
| Gas & Electric | £20.30 |
| TOTAL | £ |

2a. What is the total cost of Mary's bills?

Write your answer in the box next to TOTAL in the table above

2b. How much money is paid for Council Tax? Tick (☒) the correct answer

i) Eighty pounds and seventy pence

☐

ii) Eighty pounds and seven pence

☐

iii) Eighteen pounds and seventy pence

☐

iv) Eighteen pounds and seven pence

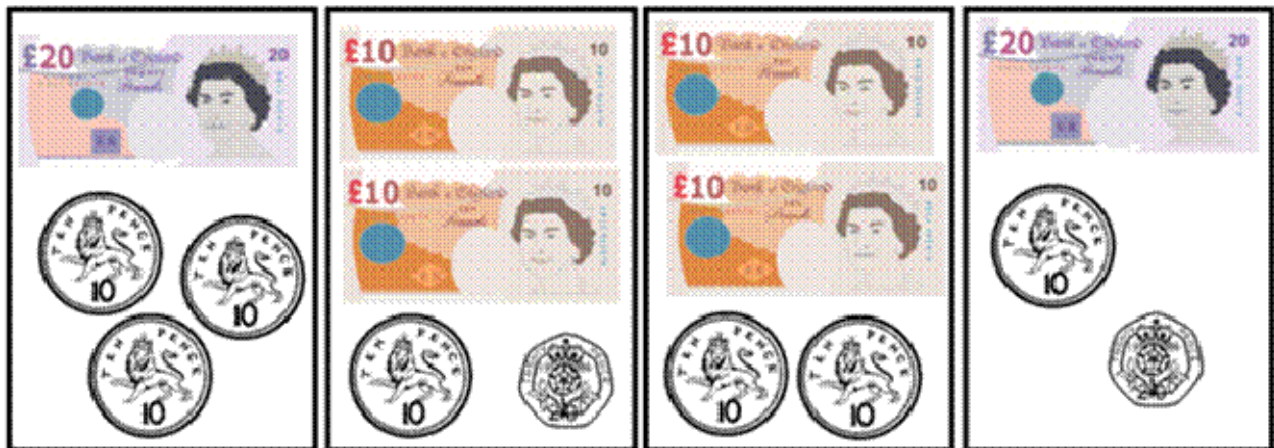
☐

2c. Round the Rent to the nearest £10

Answer = £

2d. Which of these *does not* match the cost of the Gas & Electric bill?

Tick (☒) one box



a

b

c

d

Mary needs to count some coins

2e. How many pence are there in £1.30?

Answer = p

2f. How many 5p pieces are needed to make 75p?

Answer =

Name

Number Sequences

| | | | |
|-----|-----|-----|-----|
| 705 | 648 | 760 | 647 |
|-----|-----|-----|-----|

3a. Put the numbers above in order, starting with the smallest

| Smallest | | Largest | |
|----------|--|---------|--|
| | | | |

3b. Two of these numbers are even

Write these numbers in the boxes below

| | |
|-------------|-----------------------------|
| Even number | 2 nd even number |
| | |

3c. Complete the number sequences

| | | | | | |
|-----|-----|-----|--|-----|--|
| 438 | 440 | 442 | | 446 | |
|-----|-----|-----|--|-----|--|

| | | | | | |
|----|----|----|--|----|--|
| 36 | 33 | 30 | | 24 | |
|----|----|----|--|----|--|

3d. Karen says $7 \times 6 = 45$.

Is this true or false? Tick (☒) one box

☐

True

☐

False

Name

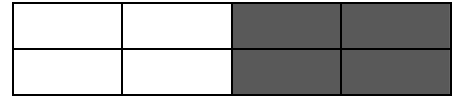
Fraction Shapes

4a. Which shape is more than half-shaded? Tick (☒) one box

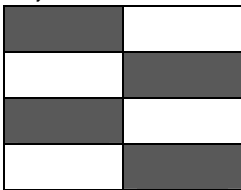
i)



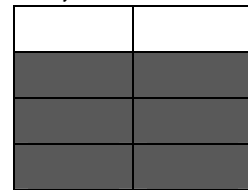
iii)



ii)



iv)



4b. Which fraction has the same value as the fraction in the box?

Tick (☒) one box

| |
|---------------|
| $\frac{4}{8}$ |
|---------------|

$\frac{8}{12}$
i)

$\frac{1}{2}$
ii)

$\frac{1}{3}$
iii)

4c. Which fraction has a value of 1? Tick (☒) one box

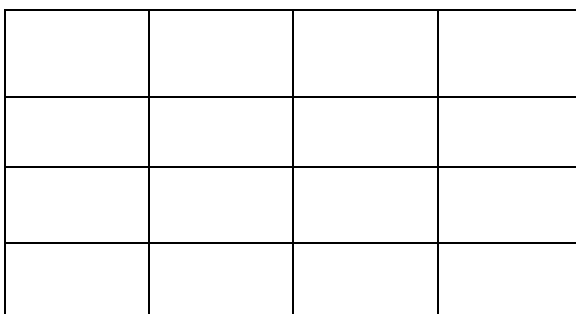
$\frac{1}{6}$
i)

$\frac{7}{5}$
ii)

$\frac{6}{6}$
iii)

$\frac{1}{10}$
iv)

4d. Shade $\frac{1}{4}$ of the shape below



The table shows the sale prices of Swedish armchairs

5a. What is the difference between the normal price and the sale price of the Tirup armchair?

Answer = £

Answer = £

Write your answer in the box below

Answer = metres

Name

Calculator

6a. 9 people are given 85p each.

On a calculator, which of the following is in the correct order to work out the total amount paid to them in pounds?

Tick (☒) one box

- i ☐

| | | | | | | |
|---|---|---|---|---|---|---|
| 8 | 5 | × | 0 | • | 9 | = |
|---|---|---|---|---|---|---|
- ii ☐

| | | | | |
|---|---|---|---|---|
| 8 | 5 | ÷ | 9 | = |
|---|---|---|---|---|
- iii ☐

| | | | | | | |
|---|---|---|---|---|---|---|
| 0 | • | 8 | 5 | × | 9 | = |
|---|---|---|---|---|---|---|
- iv ☐

| | | | | | | |
|---|---|---|---|---|---|---|
| 0 | • | 8 | 5 | ÷ | 9 | = |
|---|---|---|---|---|---|---|

6b. 4 newspapers cost £1.60. On a calculator, which of the following is in the correct order to work out how much one newspaper costs?

Tick (☒) one box

- i ☐

| | | | | | |
|---|---|---|---|---|---|
| 4 | × | 1 | • | 6 | = |
|---|---|---|---|---|---|
- ii ☐

| | | | | | |
|---|---|---|---|---|---|
| 4 | ÷ | 1 | • | 6 | = |
|---|---|---|---|---|---|
- iii ☐

| | | | | | |
|---|---|---|---|---|---|
| 1 | • | 6 | × | 4 | = |
|---|---|---|---|---|---|
- iv ☐

| | | | | | |
|---|---|---|---|---|---|
| 1 | • | 6 | ÷ | 4 | = |
|---|---|---|---|---|---|

This is the end of the test!

Name

Answers

The Green Grocer's Shop (5 points)

- 1a) 1182 vegetables
 1b) Four hundred and thirty six
 1c) $379 - 367 = 12$ more cabbages (allow $\frac{1}{2}$ point if correct sum but incorrect answer)
 1d) $\pounds 27 \times 3 = \pounds 81$ ($\frac{1}{2}$ if correct sum [27×3 or 3 27s added up] but incorrect answer)
 1e) $5 \times 9 = 4581$ ($\frac{1}{2}$ if correct sum [5×9 , 5 9s added up, etc.] but incorrect answer)

Mary's Bills (6 points)

- 2a) $\pounds 124.37$
 2b) iv) Eighteen pounds and seven pence
 2c) $\pounds 90.00$ or 90
 2d) c
 2e) 130p or 130
 2f) 15 five pence pieces are needed to make 75p

Number Sequences (5 points)

- 3a) 647, 648, 705, 760
 3b) 648 760
 3c) 444, 448 27, 21 (2 points = $\frac{1}{2}$ point for each correct answer)
 3d) False

Fraction Shapes (4 points)

- 4a) Shape iv) is more than half shaded
 4b) Fraction ii) has the same value
 4c) Fraction iii) has a value of 1
 4d) as right, or any correct shading to show $\frac{1}{4}$

| | | | |
|--|--|--|--|
| | | | |
| | | | |
| | | | |
| | | | |

Swedish Armchairs (3 points)

- 5a) $250 - 180 = \pounds 70$ (allow $\frac{1}{2}$ point if correct sum but incorrect answer)
 5b) $\pounds 200$ or 200
 5c) 1.5 metres high (accept 1.5 or 1.50 metres)

Calculator (2 points)

- 6a. iii)
 6b. iv)

Max score = 25

Pass mark is 80% (student must achieve at least 20/25).