

Open your eyes to pavement plants

E1 Functional English

Name _____ Date _____

Open your eyes to pavement plants



Jane goes for a walk every day. She goes with her son Fred and her dog Wolfie.

She looks for plants in the pavement. She writes the plant names next to them. She hopes people will start to spot them.



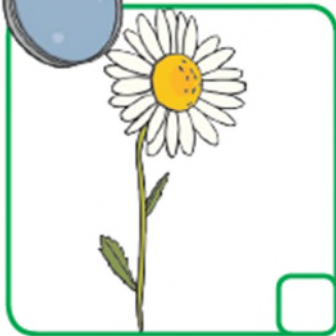
People who live in her town like it. They see plants they did not spot before. Even on the way to the shops they see new things.

Adapted from <https://www.bbc.co.uk/news/uk-england-beds-bucks-herts-52674679>

Plants and Flowers Hunt Sheet



Tick the plants and flowers that you have found!



daisy



buttercup



clover



nettle



dandelion



ivy



bramble



rose



bluebell



dog rose



sunflower



poppy

Source: Plants and Flowers Hunt Sheet (page 1 of 2), <https://www.twinkl.co.uk/resource/t-t-1103-plants-and-flowers-hunt-sheet> (2021) reproduced here with permission from <https://www.twinkl.co.uk/>

Reading

Read the text on page 1. All the answers are in the text.

1. What is the title of the text?

(E1.8, E1.10, 1 mark)

2. What is the name of the lady's dog?

- Wolf
- Wolfie
- Woolly

(E1.8, E1.10, 1 mark)

3. What does Jane look for?

- People
- Paving stone
- Plants

(E1.8, E1.9, E1.10, 1 mark)

4. What does she do when she sees a plant?

- Writes the name next to it
- Pulls the plant out
- Tells her son

(E1.8, E1.9, E1.10, 1 mark)

5. Do people in her town like this?

- Yes
- No

(E1.8, E1.9, E1.10, 1 mark)

Writing

1. Look at the photos in the text.

Write two sentences about the photos. Use capital letters and full stops.

a. _____

b. _____

_____ (E1.11/12, 13, 15, 16. 8 marks)

2. Rewrite the sentences.

Use capital letters and full stops where you need to.

jane and fred go for a walk

a. _____

fred and i walk with jane

b. _____

(E1.11, 12, 13. 4 marks)

3. Fill in the missing letters. Keep them in alphabetical order.

a. Use uppercase letters.

A	B	C	D	E	___	___
H	___	J	___	___	M	N

b. Use lowercase letters.

o	p	___	___	s	t
u	___	___	x	___	z

(E1.14, 4 marks)

Speaking and listening.

Work in pairs.

1. Talk about the text on page 1 with your partner.

What do you think about the text? Did you like the text?

Will you stop and look at plants now?

(E1.7)

2. Spell out the dog's name to your partner.

Clearly say the name of each letter. You can write it here first if you want.

(E1.1)

3. Ask your partner to spell out the name of the town where they live.

Write it here.

(E1.1)

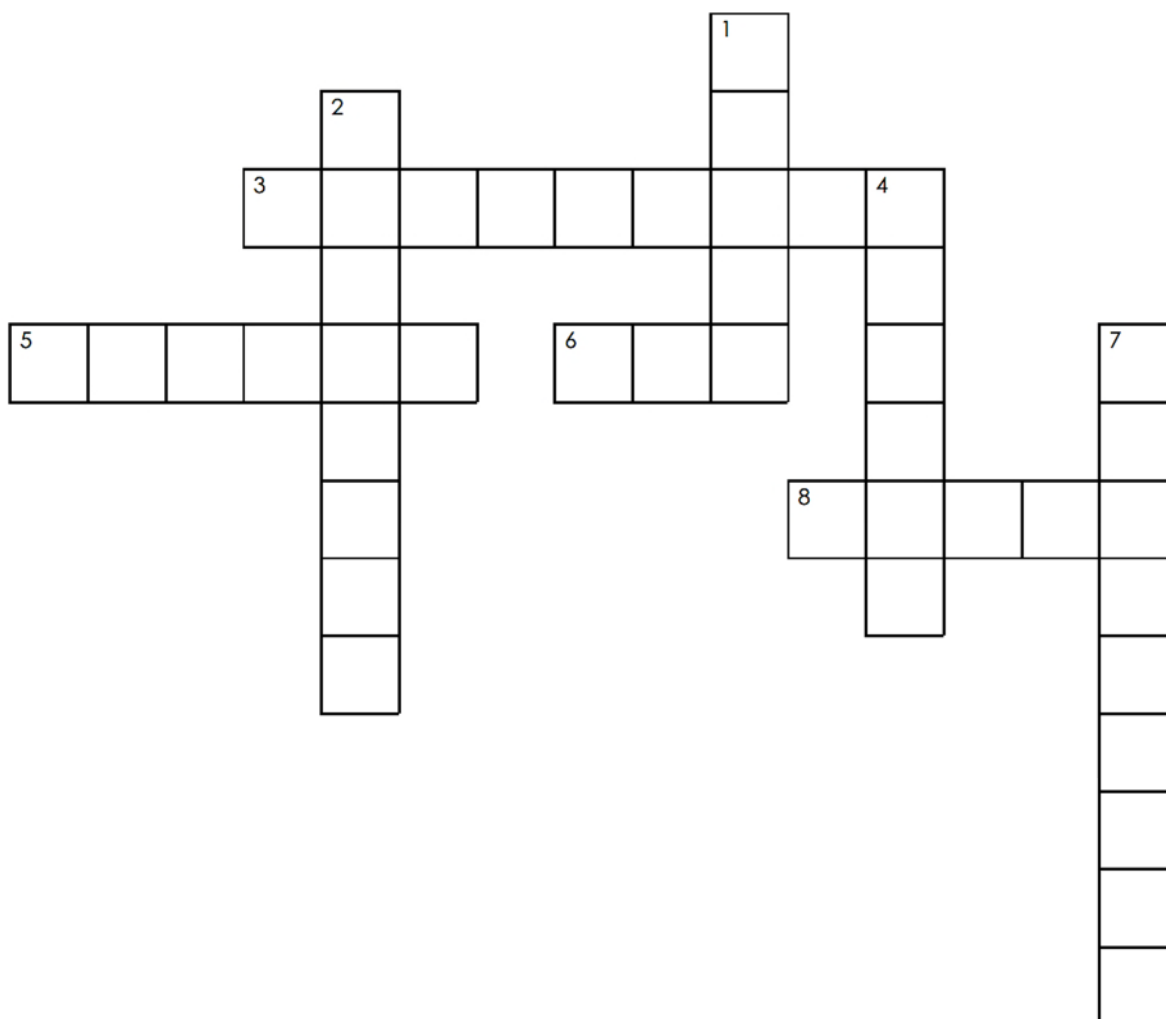
4. Look at the **plants poster** on page 2. Have you seen any of these plants?

a. Tell your partner about the plants you have seen.

b. Ask your partner questions. What plants does your partner like?

(E1.4, E1.5, E1.6)

Pavement plants



Write the words into the correct places.

Across:

- 3. dandelion
- 5. clover
- 6. ivy
- 8. plant

Down:

- 1. daisy
- 2. pavement
- 4. nettle
- 7. buttercup