

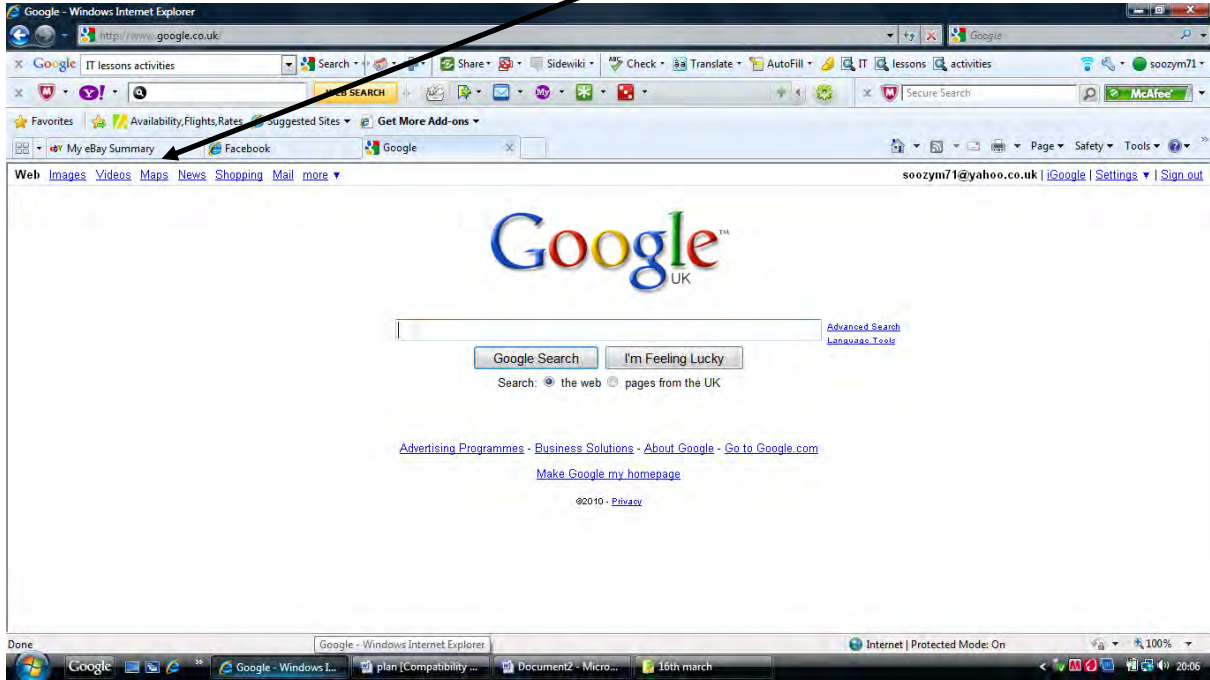
Using Google street maps



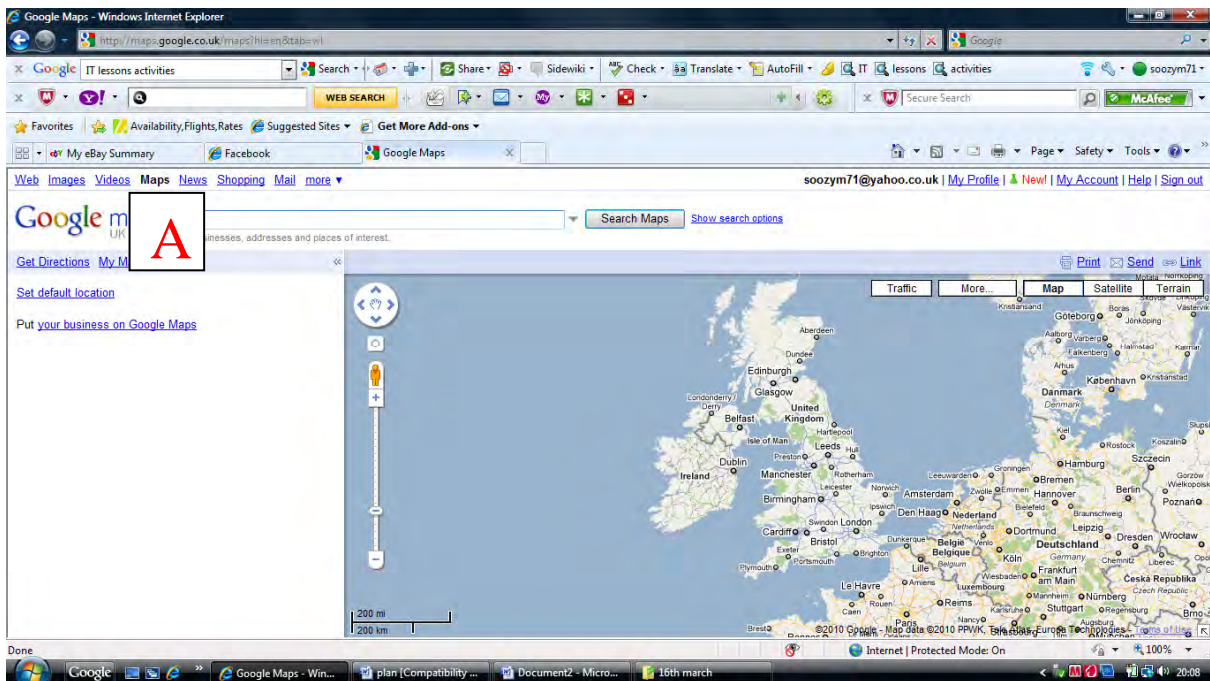
Name _____ Date _____

Go to www.google.co.uk

When you see the page below, click on 'maps'.



You will then come to a page as below:

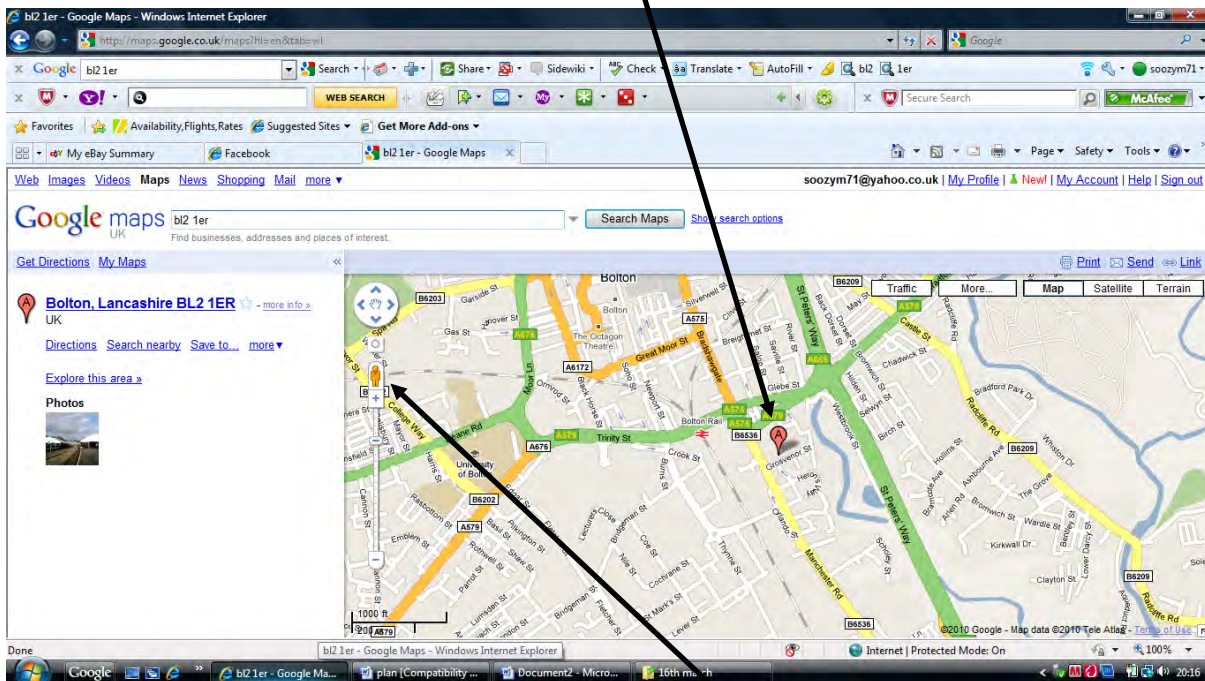


Using Google street maps

Name _____ Date _____

In the search box (labelled 'A' on the previous picture) type in a postcode or address of interest to yourself. Then click 'search maps'.

I have searched for Manchester Road College. On the picture below, you will see a small icon with an 'A' in it. This shows you on the map the street you have searched for.



On your screen you will see a small yellow figure:

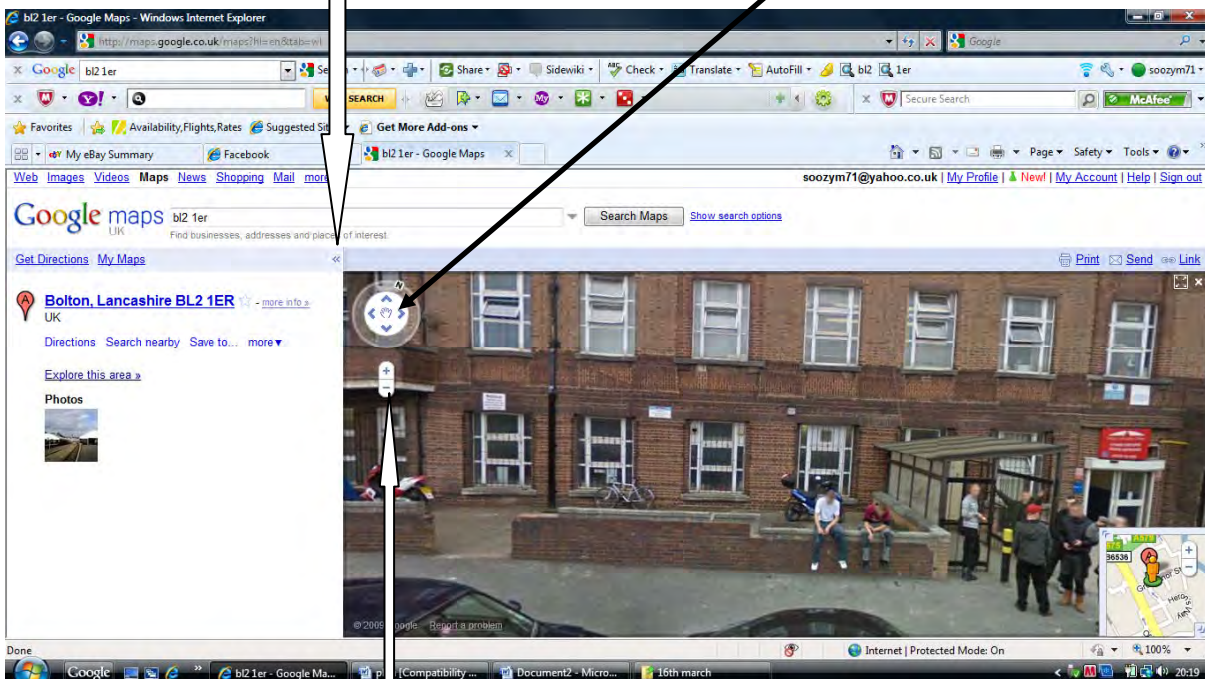
Click on this figure and drag it to the small 'A' icon. The figure will now have a flashing circle around it. When the circle is on the part of the map you wish to view, let go of your mouse. You will then get a photo image of the street you wish to view.

Using Google street maps

Name _____ Date _____

If you want a full screen picture, click on the tab (<<) shown here.

If you click this button it will turn the camera either left or right, or up and down.



If you click this button, it will zoom in or out of the picture. However, if you wish to zoom into the picture simply double click the area you wish to zoom into.

On the screen you may also see white arrows pointing in different directions. If you click on these, they will take you in whichever direction they are pointing.