

MOTOR VEHICLE VOCABULARY

Main curriculum links

Rw/E3.4 Use first and second place letters to find and sequence words in alphabetical order.

Rw/L1.2 Recognise & understand the vocabulary associated with different types of texts, using appropriate strategies to work out meaning.

Ww/L2.1 Spell correctly words used most often in work, studies & daily life, including familiar technical words.

Rw/L2.1 Read & understand technical vocabulary.

Teaching Notes

These Literacy materials were created for a group of Entry 3 motor vehicle students. The objective is to get them to learn vocabulary which they are going to need for the course.

Page 3-4 is a matching exercise: I laminated the worksheets, cut up the words and meanings and gave a set to each group (different colour paper for the words and the definitions). Once they had matched them I asked them to put the words in alphabetical order on the sheet (page 3) and we compared answers.

I gave them the answer sheet (page 2) and then got them to practise spelling the words in pairs. They then had to cover the words up in order to do the crossword, which was fun and also a way of assessing what they'd just done.

They are 16 year olds so I find I have to constantly change the activities with them. I also get the groups to compete with each other which keeps them motivated.

Rachel Emmett

remmett@tcch.ac.uk Hackney Community College

Related resources

For related resource please visit the 'Motor Vehicles and Transport' section of our 'Contextualised ICT, Literacy & Numeracy Resources for Vocational and Academic Learning' page at

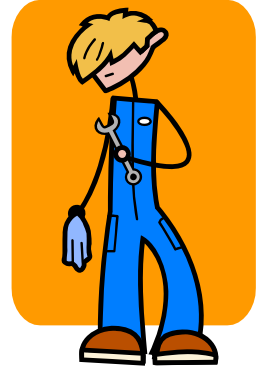
<http://www.skillsworkshop.org/context.htm>

To obtain an editable Word version of this document please send teaching ideas or any adult basic skills resource that you would like to share to

maggie@skillsworkshop.org

THANK YOU

MOTOR VEHICLE VOCABULARY



1. Accelerator

A pedal or other control used to cause a vehicle to speed up.

2. Alternator

A dynamo that generates a changing current.

3. Carburettor

A device in an engine that mixes liquid fuel and air in the correct amounts, vaporizes them and transfers the mixture to the cylinders.

4. Chassis

The base frame of a motor vehicle.

5. Clutch

A mechanism which transfers power from the engine to the gearbox and drivetrain.

6. Distributor

A device for passing electric current to each spark plug in turn.

7. Fan belt

A piece of rubber that transfers torque from the crankshaft to the shaft of the cooling fan.

8. Ignition

The action of starting the combustion of fuel in the cylinders of an engine.

9. Piston

A disc or short cylinder fitting closely inside a tube in which it moves up and down against a liquid or gas, used to cause motion in an engine.

10. Radiator

A cooling device through which water circulates.

11. Silencer

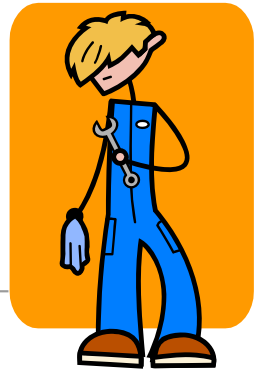
A drum-shaped part of a car's exhaust pipe designed to reduce the amount of noise made by the engine.

12. Turbocharger

A small turbine turned by the waste gases from an engine which pushes the fuel and air mixture into the engine at a higher pressure, so increasing the power produced by the engine.

MOTOR VEHICLE VOCABULARY

NOW PUT THE WORDS INTO ALPHABETICAL ORDER:



1. _____
2. _____
3. _____
4. _____
5. _____
6. _____
7. _____
8. _____
9. _____
10. _____
11. _____
12. _____

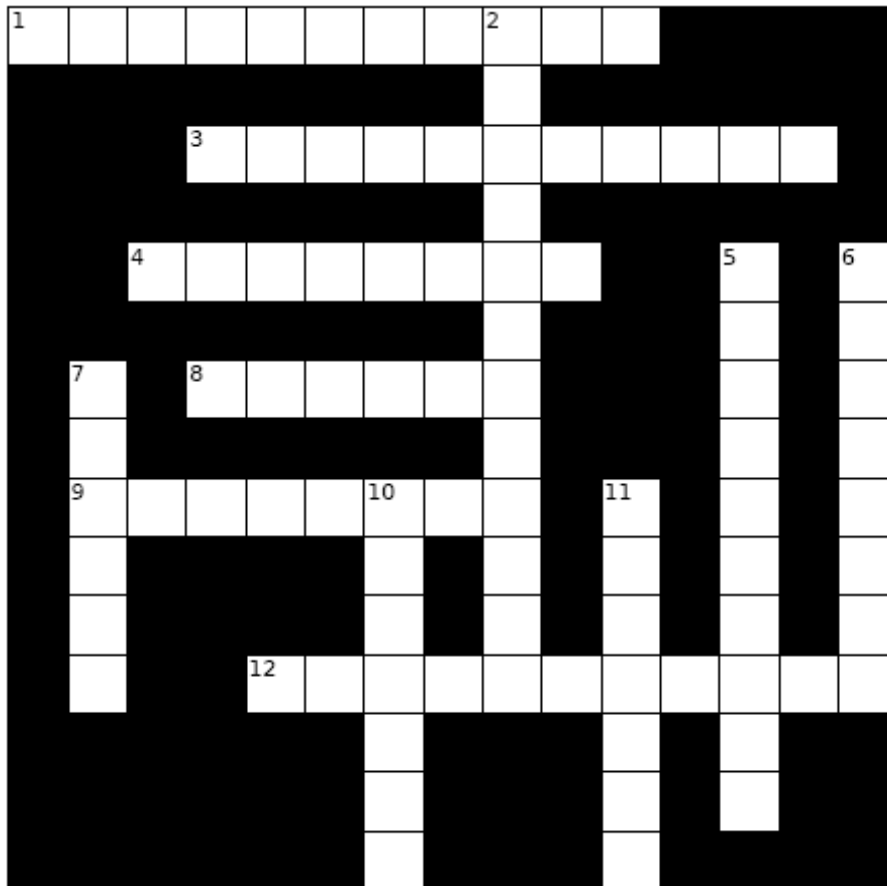
MOTOR VEHICLE VOCABULARY

| | |
|---------------------|---|
| Fan belt | A piece of rubber that transfers torque from the crankshaft to the shaft of the cooling fan |
| Radiator | A cooling device through which water circulates |
| Clutch | A mechanism which transfers power from the engine to the gearbox and drivetrain |
| Distributor | A device for passing electric current to each spark plug in turn |
| Turbocharger | A small turbine turned by the waste gases from an engine which pushes the fuel and air mixture into the engine at a higher pressure, so increasing the power produced by the engine |
| Chassis | The base frame of a motor vehicle |

MOTOR VEHICLE VOCABULARY

| | |
|--------------------|---|
| Ignition | The action of starting the combustion of fuel in the cylinders of an engine |
| Piston | A disc or short cylinder fitting closely inside a tube in which it moves up and down against a liquid or gas, used to cause motion in an engine |
| Alternator | A dynamo that generates a changing current |
| Accelerator | A pedal used to cause a vehicle to speed up |
| Carburettor | A device in an engine that mixes liquid fuel and air in the correct amounts, vaporizes them and transfers the mixture to the cylinders |
| Silencer | A drum-shaped part of a car's exhaust pipe designed to reduce the amount of noise made by the engine |

MOTOR VEHICLE VOCABULARY



Across

1. A pedal used to cause a vehicle to speed up.
3. A device in an engine that mixes liquid fuel and air in the correct amounts, vaporizes them and transfers the mixture to the cylinders.
4. The action of starting the combustion of fuel in the cylinders of an engine.
8. A mechanism which transfers power from the engine to the gearbox and drivetrain.
9. A drum-shaped part of a car's exhaust pipe designed to reduce the amount of noise made by the engine.
12. A device for passing electric current to each spark plug in turn.

Down

2. A small turbine turned by the waste gases from an engine which pushes the fuel and air mixture into the engine at a higher pressure, so increasing the power produced by the engine.
5. A dynamo that generates a changing current.
6. A cooling device through which water circulates.
7. A disc or short cylinder fitting closely inside a tube in which it moves up and down against a liquid or gas, used to cause motion in an engine.
10. The base frame of a motor vehicle.
11. A piece of rubber that transfers torque from the crankshaft to the shaft of the cooling fan.